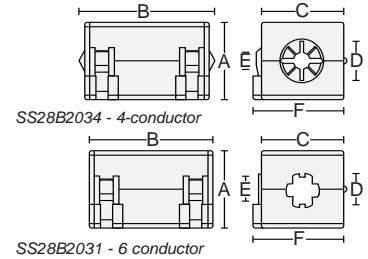


telecom cable snaps

WITH END PORTS FOR FLAT-OVAL CABLES. Box-shaped ferrite assembly in fully enclosed nylon case. Two sizes: one for 4-conductor and one for 6-conductor standard telecom flat-oval cable. Clamps around cable with appropriate pressure to maintain desired position.

Available in standard colors gray (i.e., SS28B2034) and black (i.e., SS28B2034K)
Patent Nos. 5,003,278 and 5,764,125



PART No.	Cable Size	A	B	C	D	E	F	IMPEDANCE IN OHMS
SS28B2034	4 conductor	.585 14,9	1.250 31,8	.585 14,9	.250 6,4	.120 3,0	.680 17,3	220 @ 100MHz
SS28B2031	6 conductor	.700 17,8	1.255 31,9	.675 17,1	.230 5,8	.187 4,7	.768 19,5	200 @ 100MHz



very high impedance multi-turn sleeve snap

WITH SERPENTINE CABLE THREADING CAPABILITY.

By increasing the number of times the circuit passes through the ferrite core, the effective magnetic path is lengthened yielding a significant increase in impedance. See page 4, figures 3 and 4. The gain is equal to N^2 , the square of the number of turns, and depending on the circuit cable load and frequencies involved, much of the increase can be realized.

Cables may be "looped back through" as shown at left; or, "looped over the top" as shown at left (insert).

In an alternate configuration, separate cable circuits can be accommodated without saturation. Three styles permit different approaches:

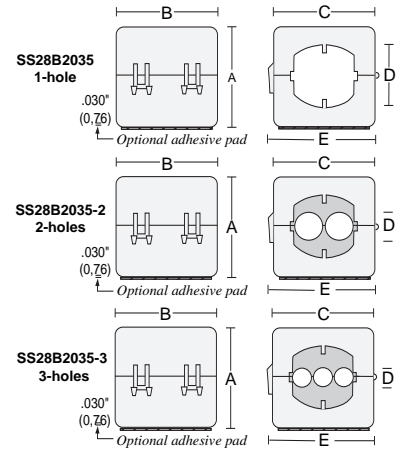
The **1-hole** allows two passes of a cable with a diameter up to .365" (9,3mm) or three passes of a cable with a diameter up to .243" (6,2mm).

The **2-hole** allows two passes of a cable with a diameter up to .335" (8,5mm).

The **3-hole** allows three passes of a cable with a diameter up to .203" (5,8mm).

Each is available with an optional adhesive foam pad mounting base.

Available in standard colors gray (i.e., SS28B2035) and black (i.e., SS28B2035K)
Patent No. 5,003,278



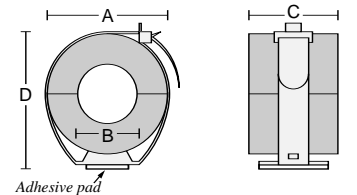
PART No.	w/Adhesive	Description	A	B	C	D	E	IMPEDANCE IN OHMS ref.
SS28B2035	AS28B2035	1-hole	1.155 29,3	1.250 31,8	1.125 28,6	.780 19,8	1.230 31,2	1N=129* 2N=2 ² =4NΩ ref.
SS28B2035-2	AS28B2035-2	2-hole	1.155 29,3	1.250 31,8	1.125 28,6	.335 8,5	1.230 31,2	1N=270* 3N=3 ² =9NΩ ref.
SS28B2035-3	AS28B2035-3	3-hole	1.155 29,3	1.250 31,8	1.125 28,6	.203 5,2	1.230 31,2	1N=340* depending on circuit load and frequency

* @ 100 MHz

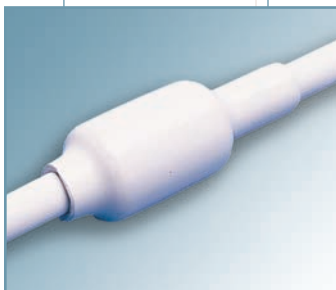


cable bundle clamp

WITH UNIVERSAL MOUNTING STRAP. For cable bundle diameters up to 1.00" (25,4mm). Allows single location for RFI suppression for multiple cables and wiring runs. Each circuit reacts independently with the suppression material without saturation. Adhesive mount base also provides a centered .203" (5,1mm) diameter hole for optional hardware attachment. Quick-release closure clip allows easy addition or removal of wires.

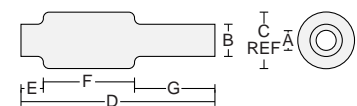


PART No.	w/ adhesive	A	B	C	D	E	IMPEDANCE IN OHMS
BC28B1251	BA28B1251	1.38 35,1	.75 19,1	.875 22,2	1.71 41,7	1.96 48,0	138 @ 100MHz
BC28B1501	BA28B1501	1.63 41,4	.75 19,1	1.000 25,4	1.96 48,0	1.96 48,0	177 @ 100MHz
BC28B1500	BA28B1500	1.63 41,4	1.00 25,4	1.000 25,4	1.96 48,0	1.96 48,0	133 @ 100MHz



pre-molded sleeve

WITH INTERNAL FRICTION GRIP Exterior PVC sheath pre-molded over ferrite suppressor. Assembles to cable prior to termination by threading in one end and out the other. Neutral gray standard color. Five sizes accommodate cable diameters from .200" to .430" (5,1 to 10,9mm). The preferred alternative to cable over-molding, shrink tubing, taping, tie wraps and other costly secondary installation operations. A drop of water in the I.D. during assembly will facilitate sliding into position.



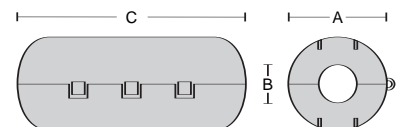
Patent No. 5,200,730

PART No.	A	B	C	D	E	F	G	IMPEDANCE IN OHMS
PM28B3375	.192 4,8	.290 7,4	.465 11,8	2.01 51,1	.250 6,4	.960 24,4	.800 20,3	140 @ 100MHz
PM28B0625	.310 7,9	.400 10,2	.715 18,2	1.82 46,2	.250 6,4	.772 19,6	.800 20,3	120 @ 100MHz
PM28B1625	.310 7,9	.400 10,2	.715 18,2	2.38 60,5	.250 6,4	1.335 33,9	.800 20,3	225 @ 100MHz
PM28B0686	.375 9,5	.465 11,8	.776 19,7	2.38 60,5	.250 6,4	1.335 33,9	.800 20,3	196 @ 100MHz
PM28B0736	.430 10,9	.520 13,2	.776 19,7	2.38 60,5	.250 6,4	1.335 33,9	.800 20,3	176 @ 100MHz



sleeve snap

HIGH IMPEDANCE, EXTRA LONG FOR POWER CORDS, I/O CABLES 50% longer than standard lengths; eliminates the need to double wrap core I.D.'s for high impedance, thus leaving the peak attenuation above 300MHz. Three sizes fit up to .250" (6,4mm) diameter. Black color.



PART No.	A	B	C	IMPEDANCE IN OHMS
SS28A0434K	.600 15,2	.200 5,1	1.690 42,9	255 @ 100MHz
SS28A0592K	.750 19,1	.175 4,4	2.095 53,2	457 @ 100MHz
SS28A0593K	.750 19,1	.250 6,4	2.075 52,7	352 @ 100MHz